



RS45 SERIES

REACHSTACKER CONTAINER HANDLERS

**STRONG PARTNERS.
TOUGH TRUCKS.™**

WWW.HYSTER.COM

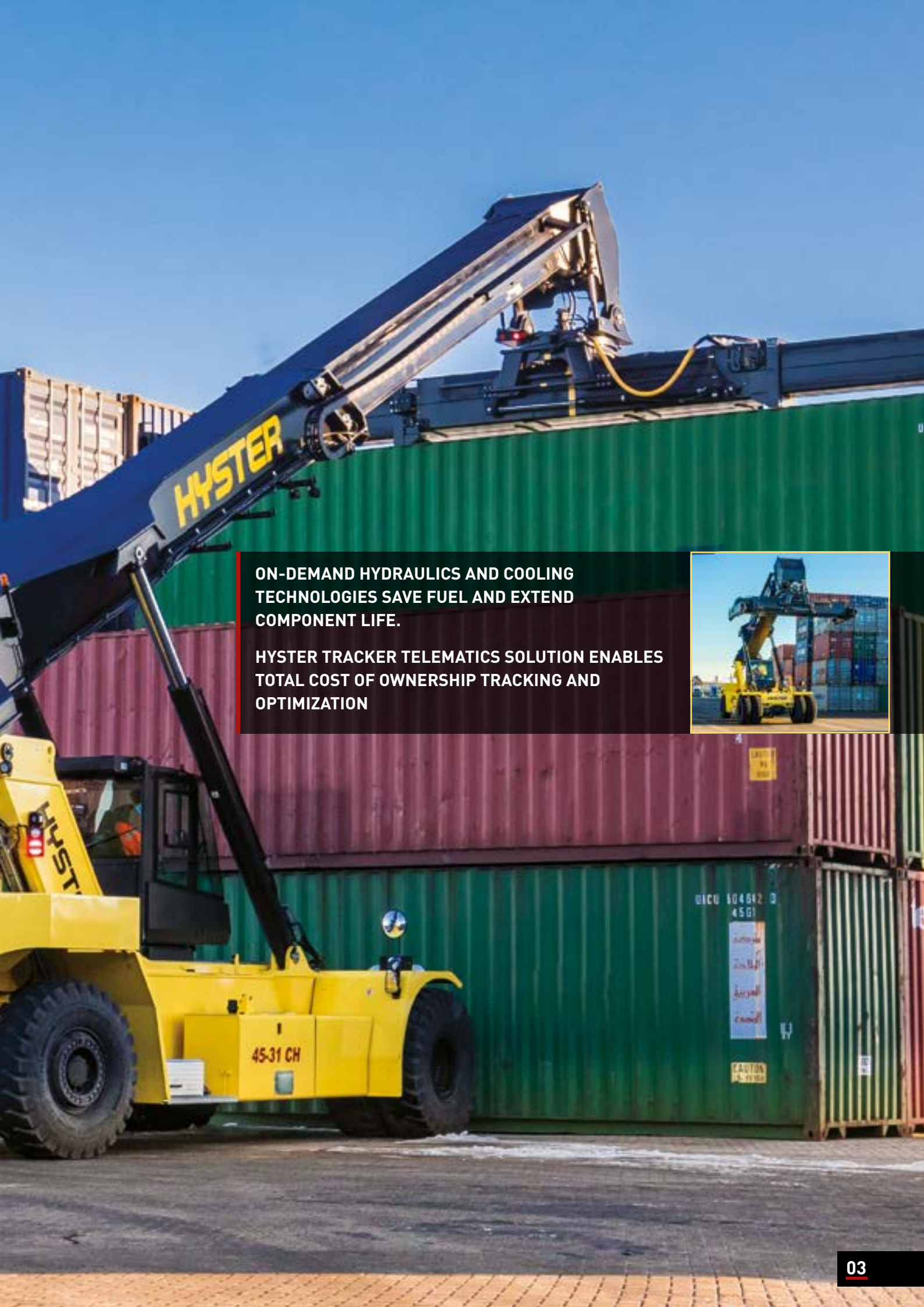
OPTIMIZED FOR CONTAINER HANDLING IN PORT OPERATIONS

Reachstackers are versatile machines serving a great variety of applications globally. But you are focused on moving containers, so what if you could choose a machine engineered specifically for the job that sets new standards in Total Cost of Ownership?

With 45 ton lift capacity in the first row and 27/31 ton in the second row, the RS45 Reachstacker is optimized for container handling operations. The intelligent design includes a right-sized engine, balanced chassis and dedicated boom, putting weight and strength exactly where it needs to be to deliver that world renowned Hyster toughness. And that is good for you because it consumes up to 15% less fuel compared to higher displacement/higher powered engines and enhances tire life.

All this saves you money.





ON-DEMAND HYDRAULICS AND COOLING TECHNOLOGIES SAVE FUEL AND EXTEND COMPONENT LIFE.

HYSTER TRACKER TELEMATICS SOLUTION ENABLES TOTAL COST OF OWNERSHIP TRACKING AND OPTIMIZATION



RS45 SERIES REACHSTACKER

HIGH OPERATION SPEEDS BOOST PRODUCTIVITY

When a container ship is at berth, time is money, and you need to be able to rely on your equipment to get the job done.

Shouldn't your container handler keep up with you?

You'll be pleased with your cycle times while operating the RS45 container handler. The 2-speed hoist system significantly boosts unladen lift speed. This is combined with fast acceleration required for productivity in a container yard. With its right-sized engine and transmission inching offering great control during container stacking, it's sure to do the job quickly, and do it right. The RS45 container handler features a well proven Hyster® spreader, which is fast and efficient and allows the operator to be very productive.



Your operator's comfort is also a factor in boosting productivity. The spacious cabin is ergonomically designed with intuitive controls positioned for efficient handling and convenience. The standard powered sliding cab allows your operator to choose an optimal forward vantage point at the push of a button.



DURABILITY COMES STANDARD

Ports are harsh environments. You need a container handler that shows up for work day after day, month after month, year after year (and for some decade after decade).

Shouldn't your truck excel your expectations?

The RS45 container handler is designed and built by the same experienced Hyster® team as our RS46 truck series. That's why you'll be getting the recognized Hyster manufacturing quality and proven components from industry-leading suppliers, such as the QSL9 Tier 3/StagellIA Cummins engine, Kessler or Axletech drive axle, Spicer Off-Highway TE-27 transmission, Hyster spreader and Danfoss hydraulics.

On-demand features help to lower the overall cost of ownership, by increasing component life and reducing service requirements. For example, the cooling fan operates only when required, reducing accessory loads on the powertrain, consuming less fuel and lowering noise levels. In addition, the Hyster® on-demand load sensing hydraulic system lowers fuel consumption by up to 10% and extends component life, delivering hydraulic oil only when required.



THE EASILY REMOVABLE TOP DECK PLATES WITH QUICK DISCONNECT LATCHES PROVIDES FAST ACCESS TO MAJOR COMPONENTS.

THE CANBUS TRUCK AND SPREADER CONTROLS ENABLE FAST AND EASY FAULT DIAGNOSIS.



RS45 SERIES REACHSTACKER

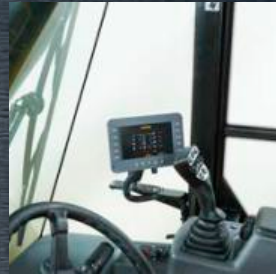
EASY SERVICE FOR MORE UPTIME

All major components are readily accessible for servicing, resulting in shorter downtimes, increased productivity and lower cost of ownership. We also ensure you have the parts you'll need to do the job along with a dedicated dealer network ready to have your back when you need it.

What if you could access major truck components in seconds?

Designed with your service technician in mind, the RS45 container handler sports a smart truck layout for quick and easy service access. For example, the operator cab slides forward or backward so your service technician can readily reach the components underneath without the need to use tools. Hinged access covers make daily checks a snap. And all of the cooling system connection ports can be clearly reached from underneath the truck.

Accessibility is not the only thing that makes your service technician's job easier. Major engine and drivetrain components are engineered to operate on 500-hour service intervals. Extended hydraulic oil change intervals up to 3,000 hours (up to 10,000 hours with hydraulic fluid sampling) help ensure that the truck remains in operation longer between routine maintenance.



HYSTER EUROPE


Centennial House, Frimley Business Park, Frimley, Surrey, GU16 7SG, England.


Tel: +44 (0) 1276 538500

www.hyster.eu infoeurope@hyster.com [/HysterEurope](https://www.facebook.com/HysterEurope) [@HysterEurope](https://twitter.com/HysterEurope) [/HysterEurope](https://www.youtube.com/HysterEurope) www.hyster-bigtrucks.com

HYSTER-YALE UK LIMITED trading as Hyster Europe. Registered Address: Centennial House, Building 4.5, Frimley Business Park, Frimley, Surrey GU16 7SG, United Kingdom.

Registered in England and Wales. Company Registration Number: 02636775.

HYSTER,  and FORTENS are registered trademarks in the European Union and certain other jurisdictions.

MONOTROL[®] is a registered trademark, and DURAMATCH and  are trademarks in the United States and in certain other jurisdictions.

Hyster products are subject to change without notice. Forklift trucks illustrated may feature optional equipment.